



September 1, 2009

Progress Report No. 2

Welcome to the highlights and periodic update of the work underway at Haley's Ditch. We have kept this update short so you can quickly read and see what work is underway and what the next steps will be. If you need more information or have questions please call or write to Cory Smith, Lockheed Martin Communications – 330.796.2038 or 330.256.7209. E-mail [cory.a.smith@lmco.com](mailto:cory.a.smith@lmco.com)

### Project Work Performed During August

Soil staging and truck loading areas were constructed and digging began in the South area of the project. Loading and moving of excavated materials is underway. Trucks are cleaned after loading and prior to movement onto highways. The excavated materials are hauled to licensed and permitted landfills. Through August 23 approximately 2490 tons of materials with less than 25 parts per million of PCBs have been hauled to American Landfill in Waynesburg, Ohio and 1900 tons of materials with greater than 25 parts per million PCBs has been moved to EQ Landfill in Belleville, Mich. Surveying of the new ditch alignment has begun along the western side of Haley's Ditch. A by-pass pump system has been installed and water that is pumped from excavations is treated through an onsite filtration system. Tests conducted on this water confirm PCBs are at non-detect levels, which is below 1 part per billion. The culvert at the northern side of the South Area has been removed. Bridge sections have been delivered.

### Next Steps

Layout of the new ditch area will continue and this new ditch will be used as an alternate by-pass route for any excessive water that can't be pumped by the by-pass system. Digging and hauling will continue along with confirmation sampling.

### Health and Safety

Loss Prevention System is being performed on a daily basis. Morning and afternoon safety meetings are conducted with all field personnel. Job Safety Analyses are reviewed and modified as needed.

"As you know we have had unprecedented rainfall the past several weeks. This is putting us behind on our original schedule yet we are hopeful we will have remediation complete by the end of 2009. However, we may not get all of the plantings and landscape restorations completed. We may have to return in the spring of 2010 to wrap up that work. We will keep you informed as this situation develops." --- Dave Gunnarson, Project Manager, Lockheed Martin



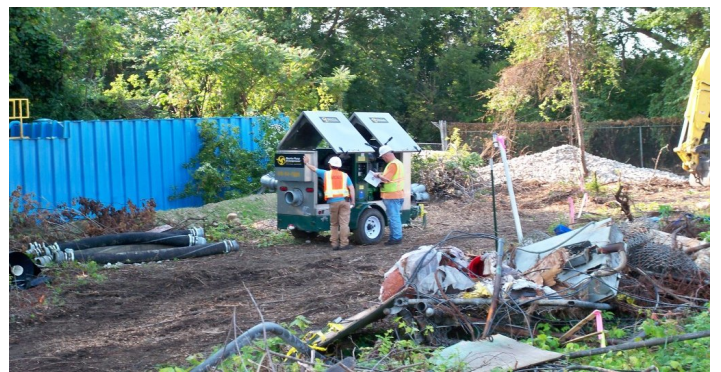
Excavation of the western side



Excavated area showing grid layout



(Above) Loading of materials to go to permitted landfills in Michigan and Ohio  
(Below - Left) Tarp used to cover materials prior to loading  
(Below - Right) Installation of by-pass pump system



---

SEND ADDRESS CORRECTION TO:  
Susan Gaffney-Evans, Associate  
ARMSTRONG and Associates  
c/o 125 Brookside Cove  
Paducah, KY 42003

FIRST  
CLASS  
POSTAGE

ADDRESS LABEL