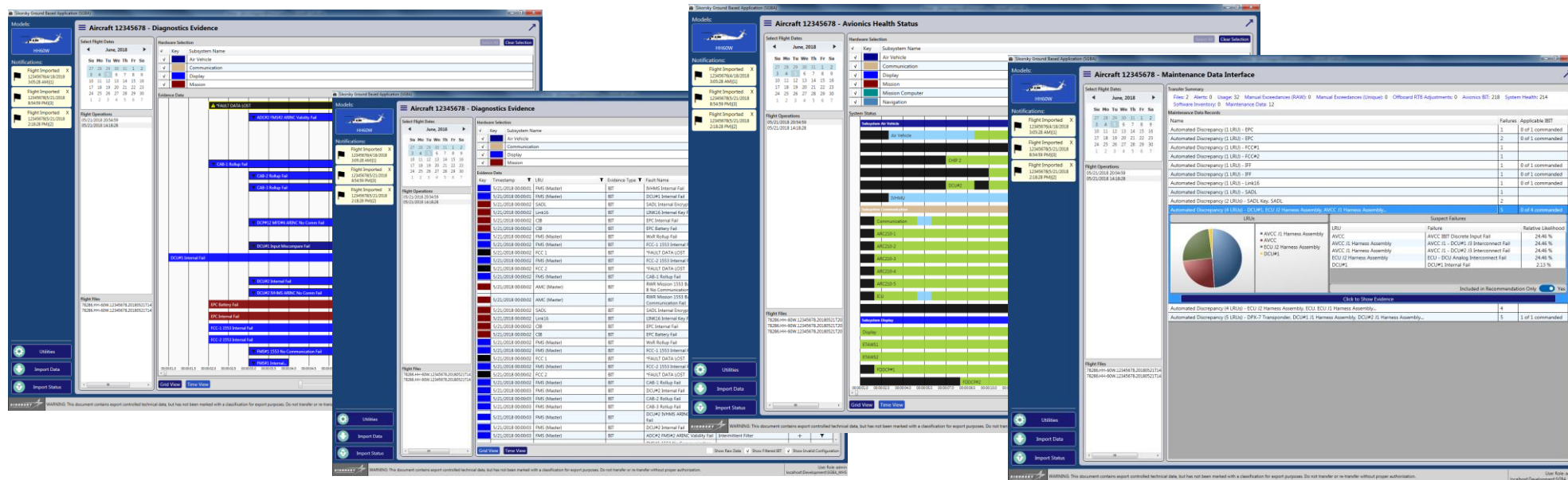


# SIKORSKY GROUND BASED APPLICATION (SGBA) AND MAINTENANCE DATA INTERFACE (MDI)



# SIKORSKY GROUND BASED APPLICATION (SGBA)

The SGBA is a suite of tools to help analyze, process, and compile flight data into useful information for the maintenance crew, logistics team, operations department, and engineering support. It provides automated fault isolation and false alarm reduction, alert generation, Rotor Track and Balance (RTB), and In-Service Tuning. It also includes viewers for exceedances, parametric data, flight usage, mechanical diagnostics, vibration diagnostics, BIT data, software version data, and avionics health status.



## FEATURES:

- Automated fault isolation and false alarm reduction
- RTB and In-Service Rotor Tuning
- Facilitates HUMS data analysis
- Integration with ISS for aircrew/pilot debrief and data archival to JKCS.

## BENEFITS:

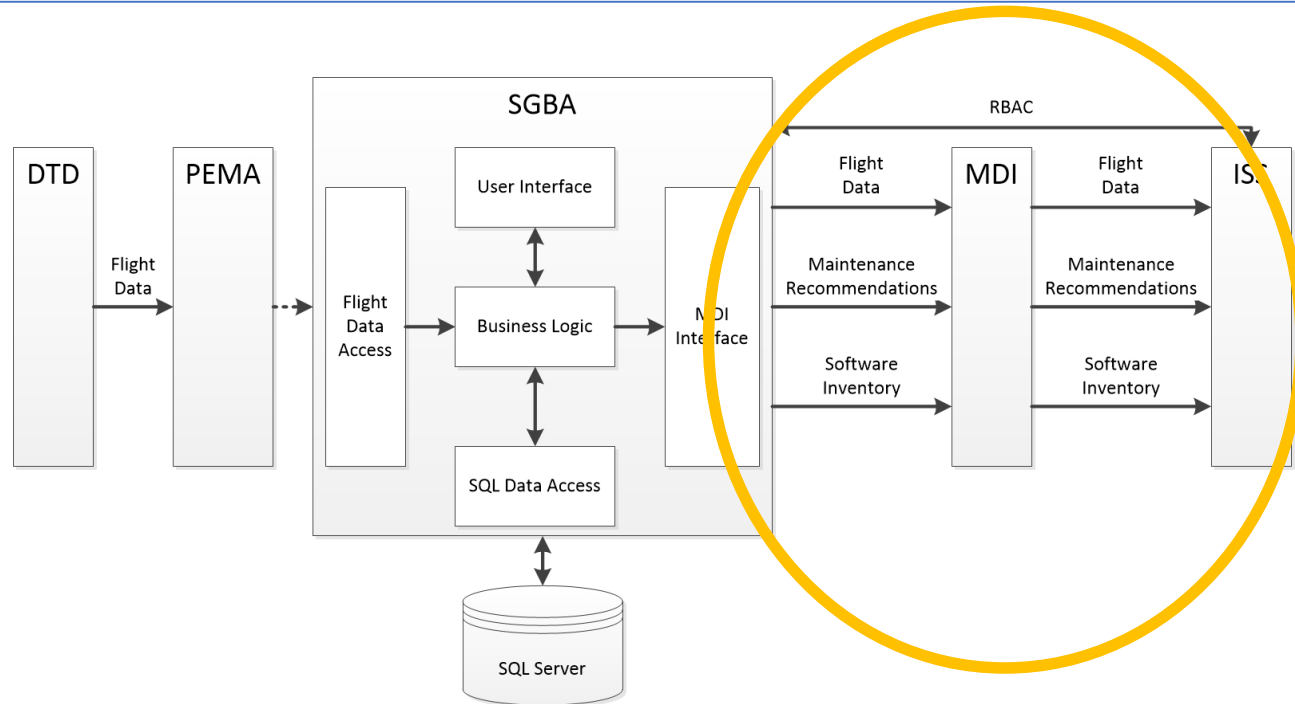
- Integrates securely with existing customer systems/equipment
- Facilitates ground-based troubleshooting
- Reduces burden on maintainer
- Common hardware/software footprint
- Complies with customer operating procedures

## CUSTOMERS AND UTILIZATION:

- United States Navy
- United States Marine Corp
- United States Airforce
- Field Service Representatives
- Maintainers and Debriefers

# MAINTENANCE DATA INTERFACE (MDI)

The MDI application functions as the data distribution hub between the Sikorsky Ground Based Application (SGBA) and the Integrated Support System (ISS). The MDI receives downloaded flight and maintenance data from the SGBA and provides the transport services for the delivery to the ISS for Debriefer review and maintenance action.



## FEATURES:

- Transport Services between SGBA and ISS using Industry Standard Windows Communication Foundation (WCF) for simplified Maintainability.
- Library of DLL files that are hosted by the SGBA.

## CUSTOMERS AND UTILIZATION:

- United States Navy
- United States Marine Corp
- United States Airforce
- Lockheed Martin Mission Systems & Training Publications Group

# SGBA/MDI SYSTEM REQUIREMENTS

The requirements listed below apply to the following versions of the SGBA and MDI:

Name	Revision	Release Date
SGBA R1	60B51-W0601-000-001	4/9/2018
SGBA R2	60B51-W0601-000-002	10/24/2018
SGBA R3	60B51-W0601-000-003	Future

Name	Revision	Release Date
MDI R1	60B40-W0601-000-001	4/6/2018
MDI R2	60B40-W0601-000-002	10/16/2018
MDI R3	60B40-W0601-000-003	Future

## Hardware Requirements

- Processor – 2GHz minimum
- Memory – 4 GB minimum, 8 GB recommended
- Hard Disk – 16 GB minimum and should be increased to accommodate flight data requirements
- Monitor – 1024 x 768 minimum resolution

## Software Requirements

- 64-bit Windows 7 or Windows 10 Operating System
- .NET Framework 4.5.1 or newer
- SQL Server 2012 or newer (express edition is acceptable)

***LOCKHEED MARTIN***



\*\*For More Information Contact: [krista.owens@lmco.com](mailto:krista.owens@lmco.com)