



Visitors Guideline



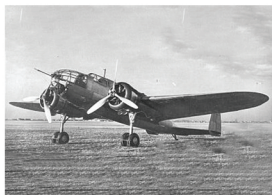
A Lockheed Martin Company

Welcome to PZL Mielec

Polskie Zakłady Lotnicze Sp. z o.o. is one of the largest aircraft manufacturer in Poland. PZL currently employees 1500 people including over 380 engineers. In 2015, Sikorsky Aircraft and PZL Mielec were acquired by Lockheed Martin, based in Bethesda, Maryland, USA. PZL Mielec is currently the largest production facility of Lockheed Martin outside the United States. PZL belongs to Rotary and Mission Systems (RMS) in Lockheed Martin's structure.



Legendary production



PZL P-37 łoś



M-15 Belfegor



MIG-15/LIM-2



AN-2



TS-11 Iskra



M-18 Dromader

About Company

PZL by numbers

company
1938
establishment

employed
1500
people

employed
380
engineers

domestic
1560
suppliers

investments
150_m
US dollars

aircraft
15500
manufactured

education program
590
participants

More information

Thanks to the development of Aircraft Research & Test Center and S-70i™ BLACK HAWK production, PZL Mielec became the most technology advanced polish aviation company.

PZL Mielec is also:

- 82 years of aviation
- leader in Polish Defence Industry
- trusted supplier of Polish MOD
- trusted member of local society
- TOP employer of Eastern Poland



Core Products

S-70i BLACK HAWK

Proven, versatility helicopter designed to meet military standards, making the Black Hawk survivable in the most rigorous combat conditions. Black Hawk platform is used by US Army and 32 different countries all over the World. Different variants of Black Hawk have flown over 10 millions hours in the most austere of environments providing an operational readiness rate of over 85%.



M28

aircraft is a high-wing cantilever mono-plane featuring a non-pressurized cabin, twin vertical tails, a non-retractable tricycle, fuselage-mounted landing gear with a steerable nose wheel. It is an unique design STOL commuter aircraft designed for easy reconfiguration between different types of missions. The M28 can operate from any type of runway - unpaved, grass and gravel.

Powerful turbo-prop engines allow successful STOL operation with highest load vs. range capabilities from high elevation airstrips at very high ISA.



PZL MIELEC possess 80 year tradition in aerostructure assembly working together with global leaders in aerospace industry like; BOEING, SIKORSKY AIRCRAFT COMPANY, SPIRIT AEROSYSTEMS, BAE Systems, PRATT & WHITNEY, ILYUSHIN and others. We are committed to deliver world class products and ready to comply with customer high level requirements.

Safety Procedures

Ensuring safety for both Visitors and Employees is a top priority of the Company. We want you to feel safe when you pay a visit at our site. It will be possible only if you observe our binding rules.



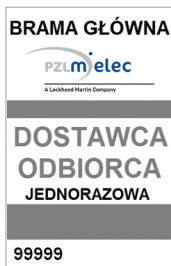
This document is intended to provide you with primary work safety and occupational hygiene as well as environmental guidelines.



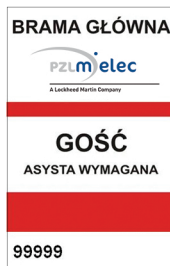
Main gate entrance process

- All visitors must enter at the front desk.
- Check in: please have your identity document i.e. valid passport and show it on the front desk.
- Upon entry you will be given a badge. Badge is required to be visible at all time. At the end of each day of visit, Visitor must log out and return the visitor badge.
- Badge color defines the access level.

There are three types of passes in PZL Mielec:



No escort required outside
PZL buildings



Escort required all time
during the visit



No escort required
during the visit

Safety Procedures

- All Visitors must report all electronic device taken inside PZL Campus.
- No device can be connected to the computer network without permission from IT department.

Obey following rules



Move by evacuation road and fire exit in emergency case



Walk along designated pedestrian alleys only



Wear safety shoes in production area



Wear safety glasses in production area



Beware of moving vehicles



Use hearing protectors in productions area



Waste segregation is obligatory in all PZL's area



Use proper footwear in production area



Smoking prohibited



Alcohol prohibited



Photographing prohibited



Inside PZL there is speed limit to 20 km/h

Foreign Object Damage

Foreign Object - FO

Any object found on the product, that regardless of the initial goal, is not in its intended place and may cause product damage.



Foreign Object Damage - FOD

Any damage attributed to foreign objects, that lowers the physical parameters of the product and threatens its safety.

There are three FOD areas in PZL Mielec:



Critical



Control



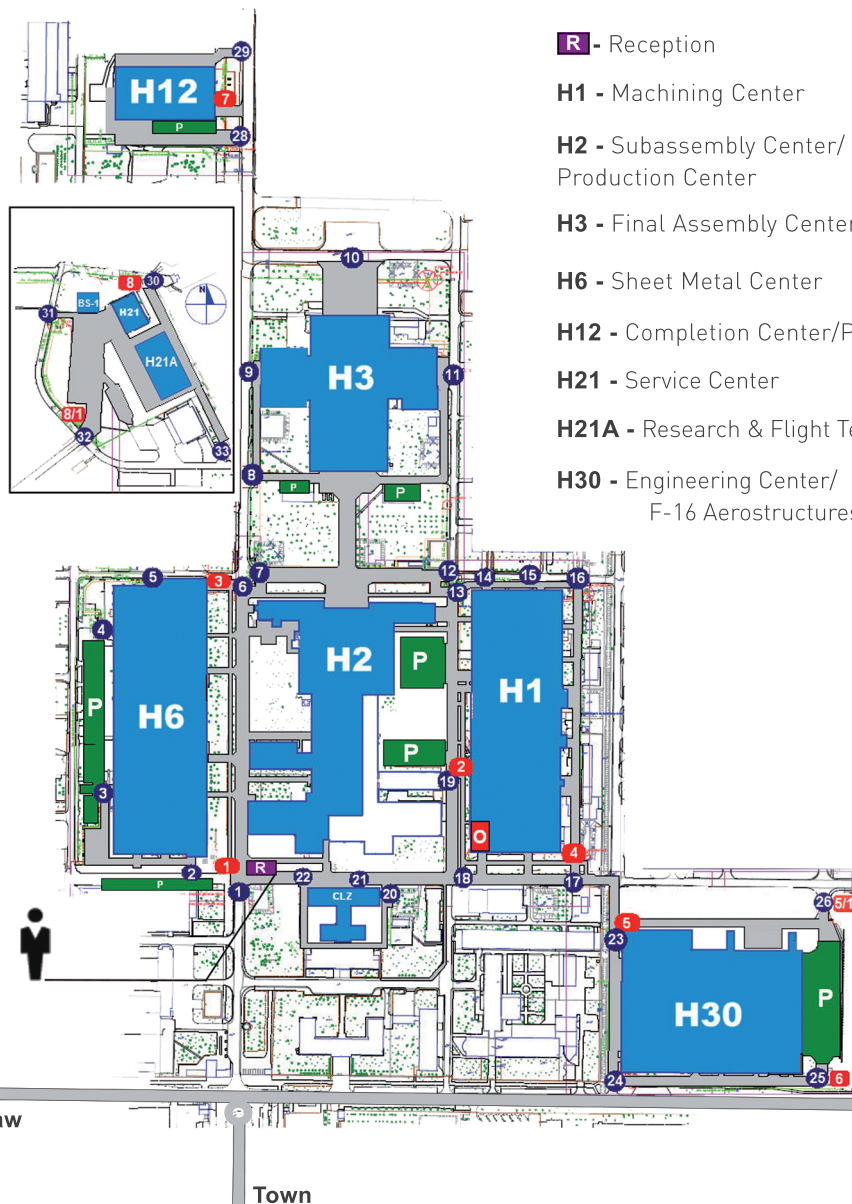
Awareness

Obey following rules

- Don't enter to the FOD control areas (critical, control, awareness) without the escort
- Follow all instructions from your escort in FOD control areas
- Entering the aircraft is permitted only with the consent and assistance of production supervisor
- Don't take inessential items into the critical or control area
- Write into the entry checklist all items brought into the critical area - when leaving the area check the completeness of those things
- Report any lost items to your escort immediately



PZL Campus Map



R - Reception

H1 - Machining Center

H2 - Subassembly Center/ Composite Production Center

H3 - Final Assembly Center

H6 - Sheet Metal Center

H12 - Completion Center/Paint Shop

H21 - Service Center

H21A - Research & Flight Test Center

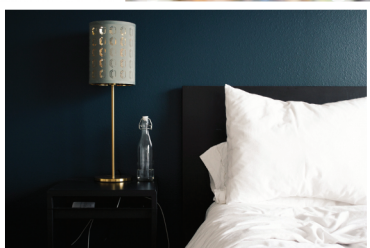
H30 - Engineering Center/
F-16 Aerostructures Center

Warsaw

Rzeszów

Town

Recommended Hotels, Restaurants



Hotel Atena ****

67 Przemysłowa Street
39-300 Mielec
Ph: +48 17 773 91 00
www.hotel-atenapl

Hotel Iskierka ****

3 Wojska Polskiego Street
39-300 Mielec
Ph: +48 17 77455 40
www.hoteliskierka.com.pl

Hotel Rado **** (5km from Mielec)

56B Wola Chorzelowska
39-333 Wola Chorzelowska
Ph: +48 17 773 73 73
www.hotelrado.pl

Hotel Polski ***

12 Biernackiego Street
39-300 Mielec
Ph: +48 17 788 86 66
www.hotelpolski.pl



Karczma Polska
2 Partyzantów Street
39-300 Mielec
Ph: +48 17 788 15 05
www.karczma-polska.pl

Manuka
Rzeczna Street
39-300 Mielec
Ph: +48 17 227 61 18

Fratelli
4A Staffa Street
39-300 Mielec
Ph: +48 17 583 74 74

Piwiarnia Warka
61 Sienkiewicza Street
39-300 Mielec
Ph: +48 17 250 66 11
www.nadwarka.pl

Airports, Transport, Hobby



Rzeszów-Jasionka

[60km. from Mielec]

Ph: +48 17 852 0081

www.rzeszowairport.pl



Radio Taxi Mielec

3-go Maja Street

39-300 Mielec

Ph: +48 881 235 235

www.taxi.mielec.pl

Warsaw

[280km. from Mielec]

Ph: +48 22 650 11 11

www.lotnisko-chopina.pl



Oborskich Palace

73 Legionów Street

39-300 Mielec

www.mielec.pl/mielec/warto-zwiedzic

[/palacyk-oborskich/](http://www.mielec.pl/mielec/warto-zwiedzic/palacyk-oborskich/)

Kraków-Balice

[150km. from Mielec]

Ph: +48 801 055 000

airport@krakowairport.pl



„Navigator” Shopping Center

4 Powstanców Warszawy Street

Ph: +48 17 787 48 81

www.galerianavigator.pl



Taxi Mielec ESKA

7 Jagiellończyka Street

39-300 Mielec

Ph: +48 735 005 005

radio@taxieska.mielec.pl



Swimming Pool

2 Powstanców Warszawy Street

Ph: +48 17 787 48 81

www.mosir.mielec.pl

Contact

POLSKIE ZAKŁADY LOTNICZE SP. Z O.O.
ul. Wojska Polskiego 3, 39-300 Mielec
Poland
www.pzlmielec.pl
pzl.lm@lmco.com




KRS 0000051791
NIP 817-17-20-432
REGON 690573796


Reception/General:

 +48 17 743 1901/02/03

Recruitment:

 +48 17 743 1294

Media Contact:

 +48 17 743 1786

Emergency Contacts



999



998



997



Hospital
22 Żeromskiego Street
39-300 Mielec
Ph: +48 17 780 01 00
www.szpital.mielec.pl



Lockheed Martin.
Your Mission is Ours.™

Polskie Zakłady Lotnicze Sp. z o.o.
www.pzlmielec.pl
www.lockheedmartin.com/sikorsky


A Lockheed Martin Company